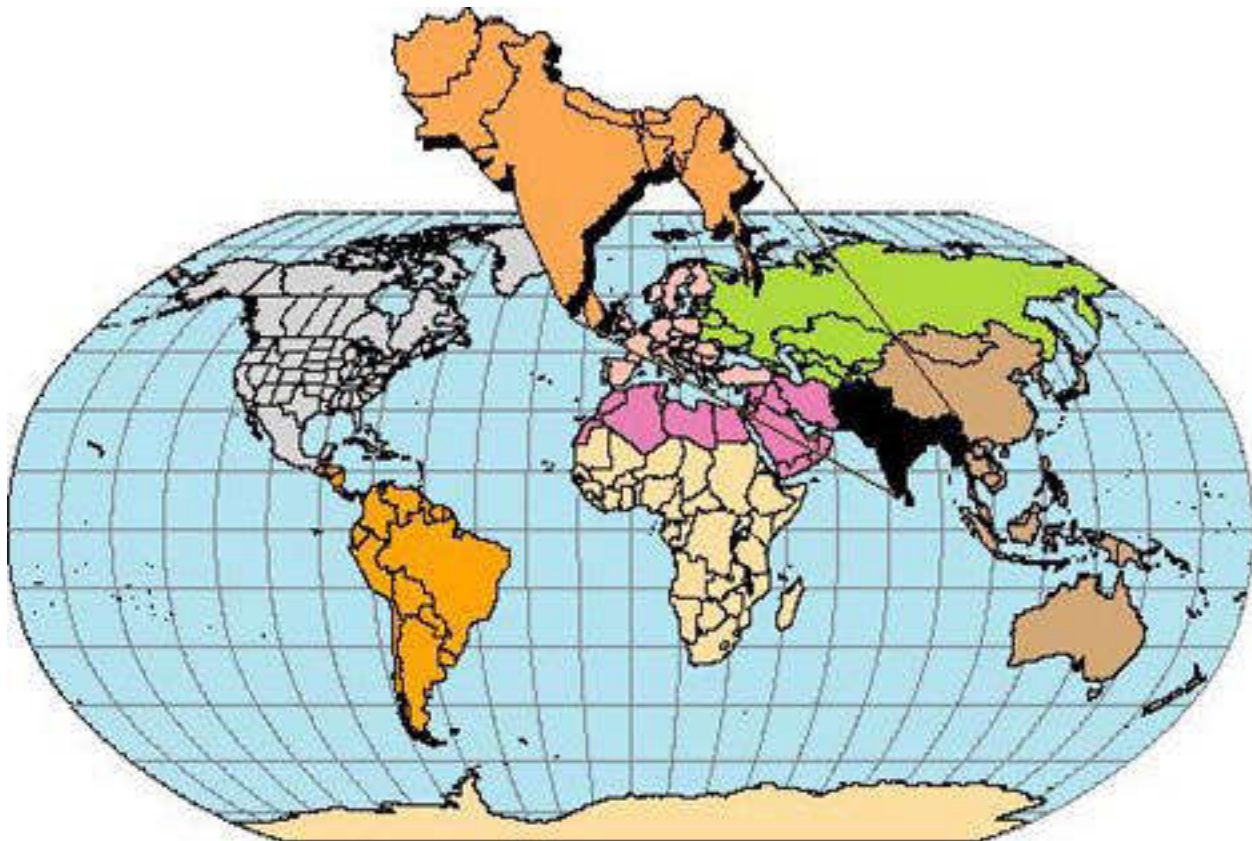


U. S. Department of the Interior
Geological Survey

MAPS SHOWING GEOLOGY, OIL AND GAS FIELDS
AND GEOLOGIC PROVINCES OF SOUTH ASIA

by

Craig J. Wandrey and Ben E. Law



Open-File Report 97-470C

This report is preliminary and has not been reviewed for conformity with U. S. Geological Survey editorial standards and stratigraphic nomenclature. Any use of trade names is for descriptive purposes only and does not imply endorsement by the U. S. government.



U.S. Geological Survey Open File Report 97-470C

MAPS SHOWING GEOLOGY, OIL AND GAS FIELDS AND GEOLOGIC PROVINCES OF SOUTH ASIA

Table of Contents

Introduction

References

Geologic provinces in South Asia, sorted by province name

Geologic provinces in South Asia, sorted by province code

Map showing geologic provinces of South Asia

**Map showing geology, oil and gas fields and geologic provinces
of South Asia**

U.S. Geological Survey Open File Report 97-470C

MAPS SHOWING GEOLOGY, OIL AND GAS FIELDS AND GEOLOGIC PROVINCES OF SOUTH ASIA

INTRODUCTION

This digitally compiled map includes petroleum geology, geologic provinces, and oil and gas fields of South Asia. The map is part of a worldwide series released by the U. S. Geological Survey World Energy Project. The goal of the project is to assess the undiscovered, technically recoverable oil and gas resources of the world and report these results by the year 2000. For data management purposes the world was divided into eight energy regions corresponding approximately to the economic regions of the world as defined by the U.S. Department of State. South Asia (Region 8) is represented on this CD-ROM (see Reference Map), and includes Afghanistan, Bangladesh, Bhutan, India, Myanmar, Nepal, Pakistan, and Sri Lanka.

Each region was then further divided into geologic provinces on the basis of natural geologic entities and may include a dominant structural element or a number of contiguous elements. Some provinces contain multiple genetically related basins. Geologic province boundaries for South Asia were delineated using data from UNESCO geologic maps, and other tectonic and geographic data (see Selected References). Offshore province boundaries were defined by the 2000 meter bathymetric contour from the UNESCO geologic maps (see References). Each province was assigned a unique number; the first digit is the region number. An attempt was made to number the provinces in geographical groups; onshore, offshore, and combined on and offshore. In South Asia, the numbering starts in the west. Oil and gas field data from Petroconsultants International Corporation worldwide oil and gas field database were allocated to these provinces. The geologic provinces are being further subdivided into petroleum systems and assessment units in order to appraise the undiscovered petroleum potential of selected provinces of the world. For a more in-depth discussion of the geologic provinces and their relative ranking in terms of total known petroleum volume, see Klett and others, 1997.

This map for South Asia was compiled and synthesized primarily from the UNESCO, 1976 and 1990, geologic maps of South and East Asia, 1:10,000,000 and 1:5,000,000 scales respectively. Specific details of the data sources are given in the metadata file on this CD-ROM. Geologic units were combined to simplify the map and to maintain consistency with other maps of the series. Precambrian rocks are undivided. Paleozoic, Mesozoic, and Cenozoic rocks have been combined in many cases (see Explanation). Oil and gas field markers represent field centerpoints published with permission from Petroconsultants International Data Corp., 1996 database.

This map was compiled using Environmental Systems Research Institute, Inc. (ESRI) ARC/INFO and ArcPlot softwares. Political boundaries and cartographic representations on this map were taken, with permission, from ESRI's ArcWorld 1:3 million digital coverage, have no political significance, and are displayed as general reference only.

U.S. Geological Survey Open File Report 97-470C

MAPS SHOWING GEOLOGY, OIL AND GAS FIELDS AND GEOLOGIC PROVINCES OF SOUTH ASIA

REFERENCES

Abu, M., Bakr, M. S., and Jackson, Roy O., 1964, Rawalpindi, Geological map of Pakistan: Geological Survey of Pakistan, scale: 1:2,000,000.

Alam, M., Khurshid, Hasan, A.K.M., Shahidul, Khan, Mujibur Rahman, and Whitney, John W., 1990, Geological map of Bangladesh: Geological Survey of Bangladesh, scale: 1:1,000,000.

Bender, F., 1981, Geology of Burma: Technische Fachhochschule Berlin, scale: 1:2,000,000.

*Choubert, G. and Faure-Muret, A., 1976, Geological World Atlas, UNESCO, sheet II, scale: 1:10,000,000.

Dasgupta, A. K., Ghose, A., and Chakraborty, K. K., 1993, Geological map of India: Hyderabad, Geological Survey of India, scale: 1:5,000,000.

Earth Sciences Research Division, 1977, Geological map of The Socialist Republic of the Union of Burma: Earth Sciences Research Division, Socialist Republic of the Union of Burma scale: 1:1,000,000.

Environmental Systems Research Institute Inc., 1992, ArcWorld 1:3M Environmental Systems Research Institute, Inc. (ESRI), Digital database, available from ESRI, Redlands, CA, scale: 1:3,000,000.

*JEBSCO Seismic Ltd., compilers, 1984, Geological world atlas U.S.S.R. and surrounding areas: extract from the Geological World Atlas, sheets 10 through 13, Commission for the Geological Map of the World/UNESCO, scale: 1:10,000,000.

*Ghose, A., Chatterjee, D., and Bannerjee, J., 1990, Geological map of South and East Asia: Commission for Geological Map of the World, Subcommission for South and East Asia, UNESCO, scale: 1,5,000,000.

Klett, T. R., Ahlbrandt, T. S., Schmoker, J. W., and Dolton, G. L., 1997 Ranking of the world's oil and gas provinces by known petroleum volumes: U.S. Geological Survey Open-File Report 97-463, one CD-ROM.

Petroconsultants International Data Corporation, 1988, World Sedimentary Basins: Petroconsultants International Data Corporation, Geneva, Switzerland, scale: 1:23,000,000.

Petroconsultants International Data Corporation, 1996, Petroconsultants Worldwide Oil and Gas Field database 1996: Petroconsultants International Data Corporation, Geneva, Switzerland.

Wirtz, D., Muhlfeld, R., Weippert, D., and Wittekindt, H., compilers, 1964, Geological map of Afghanistan Central and Southern Part: Hanover, Geological Survey of the Federal Republic of Germany, and Afghanistan Geological and Mineral Survey (Kabul), scale: 1:1,000,000.

Wittekindt, H., and Weippert, D., Compilers, 1973, Geological map of Central and Southern Afghanistan: Hanover, Geological Survey of the Federal Republic of Germany, scale: 1:500,000.

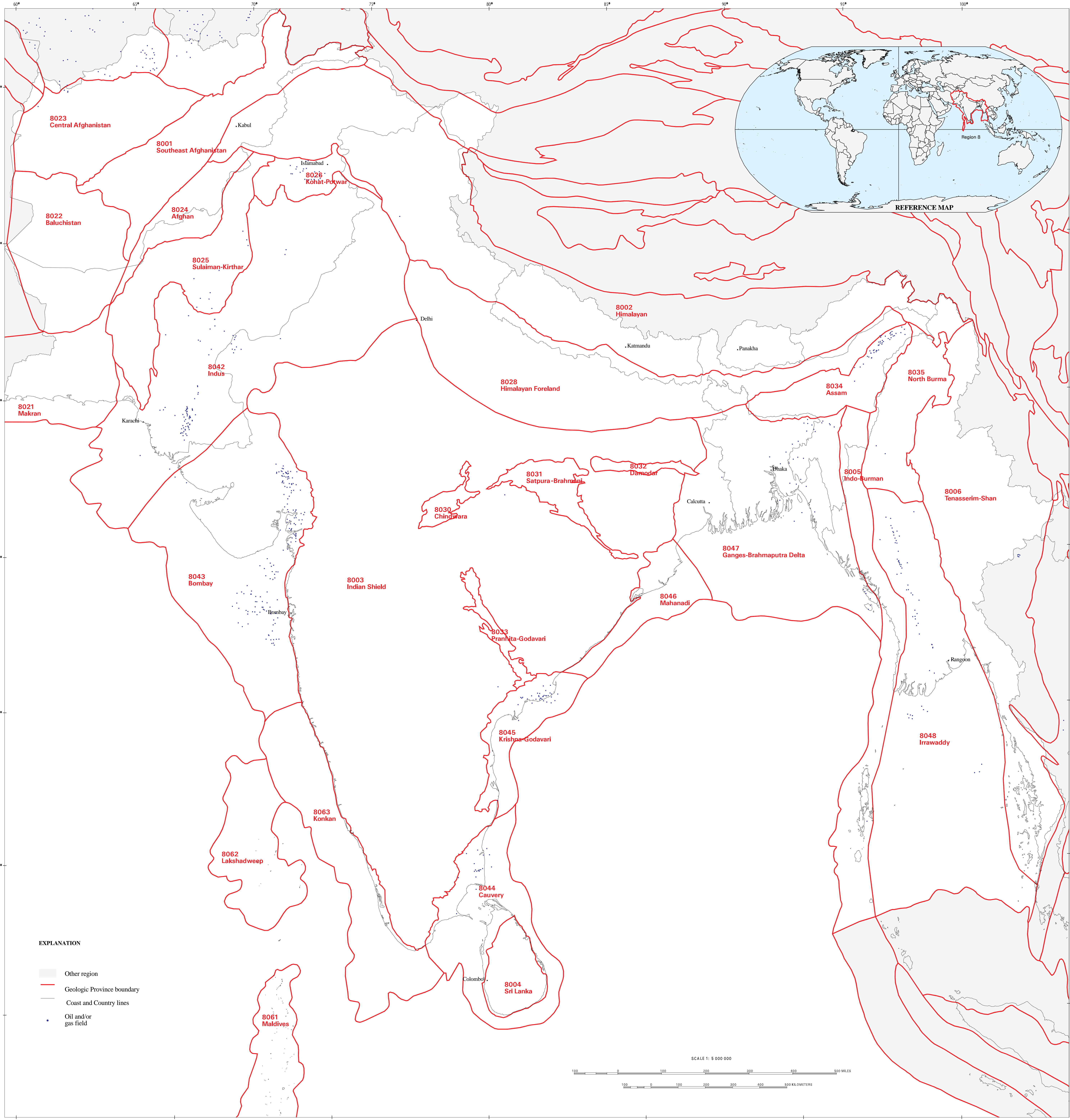
* Used with the permission of UNESCO

Geologic provinces in South Asia, sorted by province name

USGS Province Code	Province
8024	Afghan
8034	Assam
8022	Baluchistan
8043	Bombay
8044	Cauvery
8023	Central Afghanistan
8030	Chindwara
8032	Damodar
8047	Ganges-Brahmaputra
8002	Himalayan
8028	Himalayan Foreland
8003	Indian Shield
8005	Indo-Burman
8042	Indus
8048	Irrawaddy
8026	Kohat-Potwar
8063	Konkan
8045	Krishna-Godavari
8062	Lakshadweep
8046	Mahanadi
8021	Makran
8061	Maldives
8035	North Burma
8033	Pranhita-Godavari
8031	Satpura-Brahmani
8001	Southeast Afghanistan
8004	Sri Lanka
8025	Sulaiman-Kirthar
8006	Tenasserim-Shan

Geologic provinces in South Asia, sorted by province code

USGS Province Code	Province
8001	Southeast Afghanistan
8002	Himalayan
8003	Indian Shield
8004	Sri Lanka
8005	Indo-Burman
8006	Tenasserim-Shan
8021	Makran
8022	Baluchistan
8023	Central Afghanistan
8024	Afghan
8025	Sulaiman-Kirthar
8026	Kohat-Potwar
8028	Himalayan Foreland
8030	Chindwara
8031	Satpura-Brahmani
8032	Damodar
8033	Pranhita-Godavari
8034	Assam
8035	North Burma
8042	Indus
8043	Bombay
8044	Cauvery
8045	Krishna-Godavari
8046	Mahanadi
8047	Ganges-Brahmaputra
8048	Irrawaddy
8061	Maldives
8062	Lakshadweep
8063	Konkan

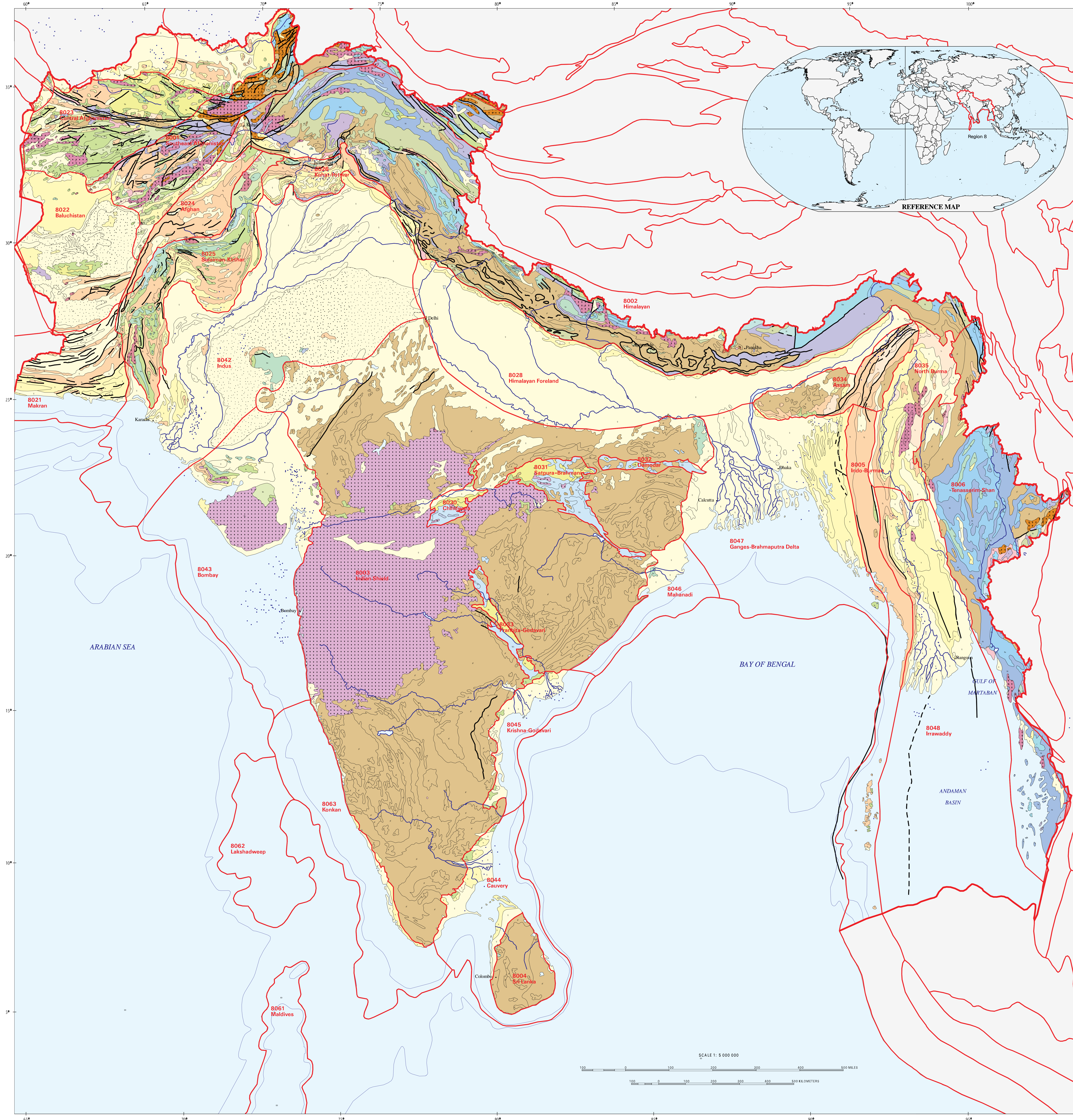


Projection: Albers Conic Equal Area
 1st standard parallel: 10 degrees north latitude
 2nd standard parallel: 40 degrees north latitude
 central meridian: 80 degrees east longitude
 latitude of origin: 20 degrees north latitude
 false easting: 0
 false northing: 0

MAP SHOWING GEOLOGIC PROVINCES AND OIL AND GAS FIELDS OF SOUTH ASIA

Compiled by Craig J. Wandrey and Ben E. Law
 1998

This map is preliminary and has not been reviewed for conformity with U.S. Geological Survey editorial standards or with the International Stratigraphic Guide.



INTRODUCTION

This digitally compiled map includes petroleum geology, geologic provinces, and oil and gas fields of South Asia. The map is part of a worldwide series released by the U.S. Geological Survey World Energy Project. The goal of the project is to assess the undiscovered, technically recoverable oil and gas resources of the world and report these results by the year 2000. For data management purposes the world was divided into eight energy regions corresponding approximately to the economic regions of the world as defined by the U.S. Department of State. South Asia (Region 8) is represented on this CD ROM (see Reference Map), and includes Afghanistan, Bangladesh, Bhutan, India, Myanmar, Nepal, Pakistan, and Sri Lanka.

Each region was then further divided into geologic provinces on the basis of natural geologic entities and may include a dominant structural element or a number of contiguous elements. Some provinces contain multiple geologically related basins. Geologic province boundaries for South Asia were delineated using data from UNESCO geologic maps, and other tectonic and geographic data (see Selected References). Offshore province boundaries were defined by the 2000 meter bathymetric contour from the UNESCO geologic maps (see References). Each province was assigned a unique number; the first digit is the region number. An attempt was made to number the provinces in geographical groups: onshore, offshore, and combined on and offshore. In South Asia, the numbering starts in the west.

Oil and gas field data from Petroconsultants International Corporation worldwide oil and gas field database were allocated to these provinces. The geologic provinces are being further subdivided into petroleum systems and assessment units in order to appraise the undiscovered petroleum potential of selected provinces of the world. For a more in depth discussion of the geologic provinces and their relative ranking in terms of total known petroleum volume, see Klett and others, 1997.

This map for South Asia was compiled and synthesized primarily from the UNESCO, 1976 and 1990, geologic maps of South and East Asia, 1:10,000,000 and 1:5,000,000 scales, respectively. Specific details of the data sources are given in the metadata file on this CD ROM. Geologic units were combined to simplify the map and to maintain consistency with other maps of the series. Precambrian rocks are undivided. Paleozoic, Mesozoic, and Cenozoic rocks have been combined in many cases (see Explanations). Oil and gas field markers represent field centerpoints published with permission from Petroconsultants International Data Corp., 1996 database.

This map was compiled using Environmental Systems Research Institute, Inc. (ESRI) ARC/INFO and Arc/Plot software. Political boundaries and cartographic representations on this map were taken, with permission, from ESRI's ArcWorld 1:3 million digital coverage, have no political significance, and are displayed as general reference only.

EXPLANATION

Q Quaternary sediments	D undivided Devonian rocks
Qs Quaternary sand and dunes	S undivided Silurian rocks
N Neogene sedimentary rocks	SDc Silurian and Ordovician carbonate rocks
Pg Paleogene sedimentary rocks	Osm Ordovician sedimentary and metamorphic rocks
Ts Tertiary sedimentary rocks	Cmm Cambrian sedimentary and metamorphic rocks
Ti Tertiary igneous rocks	pC undivided Precambrian rocks
Tv Tertiary extrusive rocks	I undivided igneous rocks
TKs Tertiary and Cretaceous sedimentary rocks	H2O Water
TKim Tertiary and Cretaceous igneous and metamorphic rocks	Other region
TKv Paleocene Cretaceous extrusive rocks	Geologic Province boundary
Mzm Mesozoic intrusive and metamorphic rocks	Geologic Region boundary
Ks Cretaceous sedimentary rocks	— Fault
Kjs Cretaceous and Jurassic sedimentary rocks	- - - Inferred Fault
KTrs Lower Cretaceous to Middle Triassic sedimentary rocks	— River
Jms Jurassic metamorphic and sedimentary rocks	— Water depth contours
JTr Jurassic and Triassic rocks	• Oil and/or gas field
Tms Triassic metamorphic and sedimentary rocks	• Town or City
TrPr Triassic and Permian rocks	
TrCs Lower Triassic to Upper Carboniferous sedimentary rocks	
MzPzi Mesozoic and Paleozoic intrusive and metamorphic rocks	
Pz undivided Paleozoic rocks	
Pou Upper Paleozoic rocks	
Pol Lower Paleozoic rocks	
Pzi Paleozoic igneous rocks	
Py undivided Permian rocks	
Cs Carboniferous sedimentary rocks	
CO undivided Carboniferous to Ordovician rocks	

SELECTED REFERENCES

Abu, M., Balz, M. S., and Jackson, Roy O., 1964, Geological map of Pakistan: Geological Survey of Pakistan, scale: 1:2,000,000.

Alam, M., Khurshid, Hasan, A.K.M., Shahid, Khan, Mujibur Rahman, and Whitney, John W., 1990, Geological map of Bangladesh: Geological Survey of Bangladesh, scale: 1:1,000,000.

Bender, F., 1981, Geology of Burma: Technische Fachhochschule Berlin, scale: 1:2,000,000.

Choubert, G. and Faure Muret, A., 1976, Geological World Atlas, UNESCO, sheet 11, scale: 1:10,000,000.

Dasgupta, A. K., Ghose, A., and Chakraborty, K. K., 1993, Geological map of India: Hyderabad, Geological Survey of India, scale: 1:5,000,000.

Earth Sciences Research Division, 1977, Geological map of The Socialist Republic of the Union of Burma: Earth Sciences Research Division, Socialist Republic of the Union of Burma scale: 1:1,000,000.

Environmental Systems Research Institute Inc., 1992, ArcWorld 1:3M Environmental Systems Research Institute, Inc. (ESRI), Digital database, available from ESRI, Redlands, CA, scale: 1:3,000,000.

*JEBCO Seismic Ltd., compilers, 1984, Geological world atlas U.S.S.R. and surrounding areas: extract from the Geological World Atlas, sheets 10 through 15, Commission for the Geological Map of the World/UNESCO, scale: 1:10,000,000.

*Ghose, A., Chatterjee, D., and Banerjee, J., 1990, Geological map of South and East Asia: Commission for Geological Map of the World, Subcommittee for South and East Asia, UNESCO, scale: 1:5,000,000.

Klett, T. R., Altherr, T. S., Schmor, J. W., and Dolan, G. L., 1997, Ranking of the world's oil and gas provinces by known petroleum volumes: U.S. Geological Survey Open File Report 97-463, one CD ROM.

Petroconsultants International Data Corporation, 1988 World Sedimentary Basins: Petroconsultants International Data Corporation, Geneva, Switzerland, scale: 1:25,000,000.

Petroconsultants International Data Corporation, 1996 Petroconsultants Worldwide Oil and Gas Field database 1996: Petroconsultants International Data Corporation, Geneva, Switzerland.

Wirtz, D., Mühlfeld, R., Weipert, D., and Wittekind, H., compilers, 1964, Geological map of Afghanistan Central and Southern Part: Hannover, Geological Survey of the Federal Republic of Germany, and Afghanistan Geological and Mineral Survey (Kabul), scale: 1:1,000,000.

Wittekind, H., and Weipert, D., Compilers, 1973, Geological map of Central and Southern Afghanistan: Hannover, Geological Survey of the Federal Republic of Germany, scale: 1:500,000.

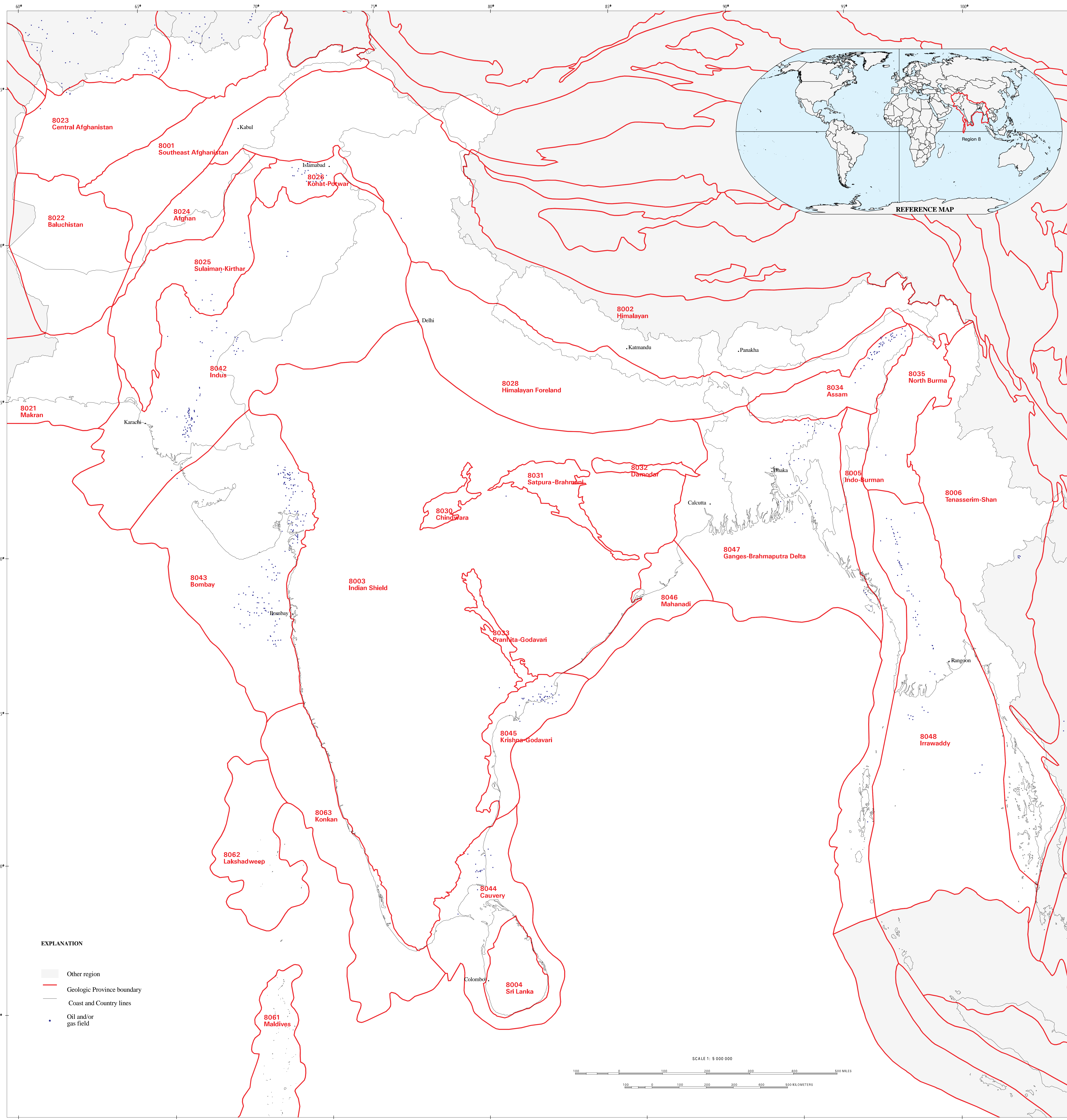
* Used with the permission of UNESCO

Projection: Albers Conic Equal Area
1st standard parallel: 10 degrees north latitude
2nd standard parallel: 40 degrees north latitude
central meridian: 80 degrees east longitude
latitude of origin: 20 degrees north latitude
false easting: 0
false northing: 0

MAP SHOWING GEOLOGY, OIL AND GAS FIELDS, AND GEOLOGIC PROVINCES OF SOUTH ASIA

Compiled by Craig J. Wandrey and Ben E. Law
1997

This map is preliminary and has not been reviewed for conformity with U.S. Geological Survey editorial standards or with the International Stratigraphic Guide.

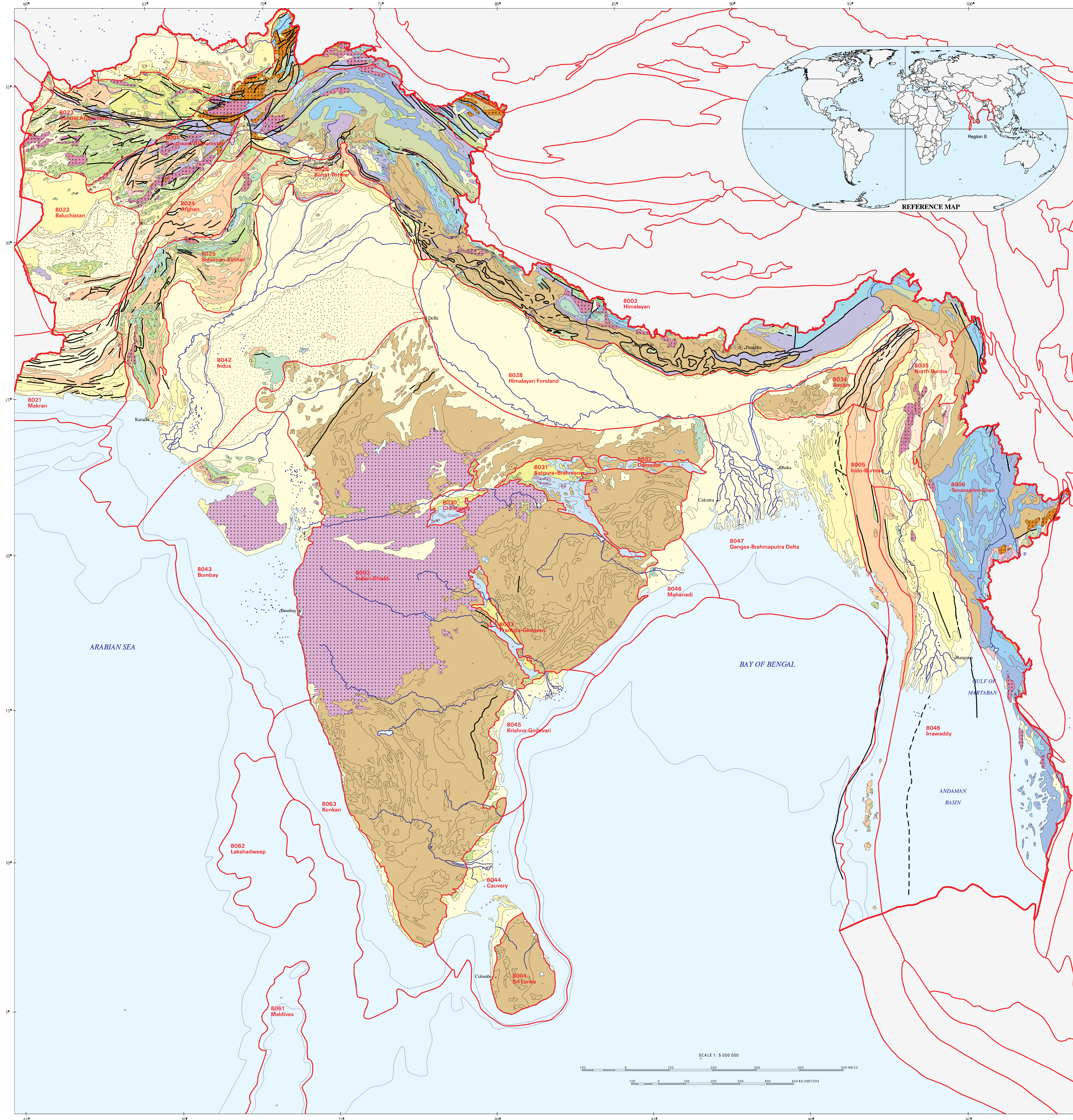


Projection: Albers Conic Equal Area
1st standard parallel: 10 degrees north latitude
2nd standard parallel: 40 degrees north latitude
central meridian: 80 degrees east longitude
latitude of origin: 20 degrees north latitude
false easting: 0
false northing: 0

MAP SHOWING GEOLOGIC PROVINCES AND OIL AND GAS FIELDS OF SOUTH ASIA

Compiled by Craig J. Wandrey and Ben E. Law
1998

This map is preliminary and has not been reviewed for conformity with U.S. Geological Survey editorial standards or with the International Stratigraphic Guide.



INTRODUCTION

This digitally compiled map includes petroleum geology, geologic provinces, and oil and gas fields of South Asia. The map is part of a worldwide series released by the U.S. Geological Survey World Energy Project. The goal of the project is to assess the undiscovered, technically recoverable oil and gas resources of the world and report these results by the year 2000. For data management purposes the world was divided into eight energy regions corresponding approximately to the economic regions of the world as defined by the U.S. Department of State. South Asia (Region 8) is represented on this CD ROM (see Reference Map), and includes Afghanistan, Bangladesh, Bhutan, India, Myanmar, Nepal, Pakistan, and Sri Lanka.

Each region was then further divided into geologic provinces on the basis of natural geologic entities and may include a dominant structural element or a number of contiguous elements. Some provinces contain multiple geologically related basins. Geologic province boundaries for South Asia were delineated using data from UNESCO geologic maps, and other tectonic and geographic data (see Selected References). Offshore province boundaries were defined by the 2000 meter bathymetric contour from the UNESCO geologic maps (see References). Each province was assigned a unique number; the first digit is the region number. An attempt was made to number the provinces in geographical groups: onshore, offshore, and combined on and offshore. In South Asia, the numbering starts in the west.

Oil and gas field data from Petroconsultants International Corporation worldwide oil and gas field database were allocated to these provinces. The geologic provinces are being further subdivided into petroleum systems and assessment units in order to appraise the undiscovered petroleum potential of selected provinces of the world. For a more in depth discussion of the geologic provinces and their relative ranking in terms of total known petroleum volume, see Klett and others, 1997.

This map for South Asia was compiled and synthesized primarily from the UNESCO, 1976 and 1990, geologic maps of South and East Asia, 1:10,000,000 and 1:5,000,000 scales, respectively. Specific details of the data sources are given in the metadata file on this CD ROM. Geologic units were combined to simplify the map and to maintain consistency with other maps of the series. Precambrian rocks are undivided. Paleozoic, Mesozoic, and Cenozoic rocks have been combined in many cases (see Explanations). Oil and gas field markers represent field centerpoints published with permission from Petroconsultants International Data Corp., 1996 database.

This map was compiled using Environmental Systems Research Institute, Inc. (ESRI) ARC/INFO and Arc/Plot software. Political boundaries and cartographic representations on this map were taken, with permission, from ESRI's ArcWorld 1:3 million digital coverage, have no political significance, and are displayed as general reference only.

EXPLANATION

Q	Quaternary sediments	D	undivided Devonian rocks
Qs	Quaternary sand and dunes	S	undivided Silurian rocks
N	Neogene sedimentary rocks	SDc	Silurian and Ordovician carbonate rocks
Pg	Paleogene sedimentary rocks	Om	Ordovician sedimentary and metamorphic rocks
Ts	Tertiary sedimentary rocks	Crmm	Cambrian sedimentary and metamorphic rocks
Ti	Tertiary igneous rocks	pC	undivided Precambrian rocks
Tv	Tertiary extrusive rocks	I	undivided igneous rocks
TKs	Tertiary and Cretaceous sedimentary rocks	H2O	Water
TKim	Tertiary and Cretaceous igneous and metamorphic rocks		Other region
TKv	Paleocene Cretaceous extrusive rocks		Geologic Province boundary
Mzm	Mesozoic intrusive and metamorphic rocks		Geologic Region boundary
Ks	Cretaceous sedimentary rocks		Fault
KJs	Cretaceous and Jurassic sedimentary rocks		Inferred Fault
KTs	Lower Cretaceous to Middle Triassic sedimentary rocks		River
Jms	Jurassic metamorphic and sedimentary rocks		Water depth contours
JTr	Jurassic and Triassic rocks		Oil and/or gas field
Tms	Triassic metamorphic and sedimentary rocks		Town or City
TrPr	Triassic and Permian rocks		
TrCs	Lower Triassic to Upper Carboniferous sedimentary rocks		
MzPz	Mesozoic and Paleozoic intrusive and metamorphic rocks		
Pz	undivided Paleozoic rocks		
Pou	Upper Paleozoic rocks		
Pvl	Lower Paleozoic rocks		
Pzi	Paleozoic igneous rocks		
Pr	undivided Permian rocks		
Cs	Carboniferous sedimentary rocks		
CO	undivided Carboniferous to Ordovician rocks		

SELECTED REFERENCES

Abu, M., Balz, M. S., and Jackson, Roy O., 1964, Geological map of Pakistan: Geological Survey of Pakistan, scale: 1:2,000,000.

Alam, M., Khurshid, Hasan, A.K.M., Shabid, Khan, Mujibur Rahman, and Whitney, John W., 1990, Geological map of Bangladesh: Geological Survey of Bangladesh, scale: 1:1,000,000.

Bender, F., 1981, Geology of Burma: Technische Fachhochschule Berlin, scale: 1:2,000,000.

Choubert, G. and Faure Muret, A., 1976, Geological World Atlas, UNESCO, sheet 11, scale: 1:10,000,000.

Dasgupta, A. K., Ghose, A., and Chakraborty, K. K., 1993, Geological map of India: Hyderabad, Geological Survey of India, scale: 1:5,000,000.

Earth Sciences Research Division, 1977, Geological map of The Socialist Republic of the Union of Burma: Earth Sciences Research Division, Socialist Republic of the Union of Burma scale: 1:1,000,000.

Environmental Systems Research Institute Inc., 1992, ArcWorld 1:3M Environmental Systems Research Institute, Inc. (ESRI), Digital database, available from ESRI, Redlands, CA, scale: 1:3,000,000.

*JEBCO Seismic Ltd., compilers, 1984, Geological world atlas U.S.S.R. and surrounding areas: extract from the Geological World Atlas, sheets 10 through 15, Commission for the Geological Map of the World/UNESCO, scale: 1:10,000,000.

*Ghose, A., Chatterjee, D., and Banerjee, J., 1990, Geological map of South and East Asia: Commission for Geological Map of the World, Subcommittee for South and East Asia, UNESCO, scale: 1:5,000,000.

Klett, T. R., Altherr, T. S., Schmorke, J. W., and Dolan, G. L., 1997, Ranking of the world's oil and gas provinces by known petroleum volumes: U.S. Geological Survey Open File Report 97-463, one CD ROM.

Petroconsultants International Data Corporation, 1988 World Sedimentary Basins: Petroconsultants International Data Corporation, Geneva, Switzerland, scale: 1:25,000,000.

Petroconsultants International Data Corporation, 1996 Petroconsultants Worldwide Oil and Gas Field database 1996: Petroconsultants International Data Corporation, Geneva, Switzerland.

Wirtz, D., Mühlfeld, R., Weipert, D., and Wittekind, H., compilers, 1964, Geological map of Afghanistan Central and Southern Part: Hannover, Geological Survey of the Federal Republic of Germany, and Afghanistan Geological and Mineral Survey (Kabul), scale: 1:1,000,000.

Wittekind, H., and Weipert, D., Compilers, 1973, Geological map of Central and Southern Afghanistan: Hannover, Geological Survey of the Federal Republic of Germany, scale: 1:500,000.

* Used with the permission of UNESCO

Projection: Albers Conic Equal Area
1st standard parallel: 10 degrees north latitude
2nd standard parallel: 40 degrees north latitude
central meridian: 80 degrees east longitude
latitude of origin: 20 degrees north latitude
false easting: 0
false northing: 0

MAP SHOWING GEOLOGY, OIL AND GAS FIELDS, AND GEOLOGIC PROVINCES OF SOUTH ASIA

Compiled by Craig J. Wandrey and Ben E. Law
1997

This map is preliminary and has not been reviewed for conformity with U.S. Geological Survey editorial standards or with the International Stratigraphic Guide.